



TEL:4006-871-227 Web:www.ybio.net Email:shybio@126.com

YBA409Hu01 100μg

Cadherin, Retinal (RCAD)

Organism Species: Homo sapiens (Human)

Instruction manual

FOR IN VITRO USE AND RESEARCH USE ONLY

NOT FOR USE IN CLINICAL DIAGNOSTIC PROCEDURES

9th Edition (Revised in Jul, 2013)

[PROPERTIES]

Residues: Leu667~Asp916 (Accession # P55283), with two N-terminal Tags, His-tag and GST-tag.

Host: *E. coli*

Subcellular Location: Cell membrane; Single-pass type I membrane protein.

Purity: >95%

Endotoxin Level: <1.0EU per 1μg (determined by the LAL method).

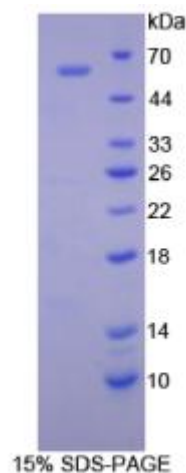
Formulation: Supplied as lyophilized form in PBS, pH7.4, containing 5% sucrose, 0.01% sarcosyl.

Predicted isoelectric point: 5.0

Predicted Molecular Mass: 59.2kDa

Applications: SDS-PAGE; WB; ELISA; IP.

(May be suitable for use in other assays to be determined by the end user.)



[USAGE]



TEL:4006-871-227 Web:www.ybio.net Email:shybio@126.com

Reconstitute in sterile PBS, pH7.2-pH7.4.

[STORAGE AND STABILITY]

Storage: Avoid repeated freeze/thaw cycles.

Store at 2-8°C for one month.

Aliquot and store at -80°C for 12 months.

Stability Test: The thermal stability is described by the loss rate of the target protein. The loss rate was determined by accelerated thermal degradation test, that is, incubate the protein at 37°C for 48h, and no obvious degradation and precipitation were observed. (Referring from China Biological Products Standard, which was calculated by the Arrhenius equation.) The loss of this protein is less than 5% within the expiration date under appropriate storage condition.

[SEQUENCES]

The target protein is fused with two N-terminal Tags, His-tag and GST-tag, its sequence is listed below.

MSPILGYWKI KGLVQPTRLL LEYLEEKYEE HLYERDEGDK WRNKKFELGL EFPNLPYYID
GDVKLTQSMA IIRYIADKHN MLGGCPKERA EISMLEGAVL DIRYGVSRIA YSKDFETLKV
DFLSKLP EML KMFEDRLCHK TYLNGDHVTH PDFMLYDALD VVLYMDPMCL DAFPKLVCFK
KRIEAIQID KYLKSSKYIA WPLQGWAQTF GGGDHPPKSD GSTSGSGHHH HHHSAGLVPR
GSTAIGMKET AA AKFERQHM DSPDLGTLEV LFQGPLGSEF-LN GD YAQLSLRILY
LEAGMYDVPI IVTDSGNPPL SNTSIIKVKV CPCDDNGDCT TIGAVAAAGL GTGAIVAILI
CILILLTMVL LFMVWMKRRE KERHTKQLLI DPEDDV RDNI LKYDEEGGGE EDQDYDLSQL
QQPEAMGHVP SKAPGVRRVD ERPVGAEPQY PIRPMVPHPG DIGDFINEGL RAADNDPTAP
PYDSLLVFDY EGGSGTAGSV SSLNSSSSGD QDYDYLNDWG PRFKKLADMY GGGEED