



TEL:4006-871-227 Web:www.ybio.net Email:shybio@126.com

YBJ527Hu01 100μg

Recombinant Biotinidase (BTD)

Organism Species: Homo sapiens (Human)

*Instruction manual*

FOR IN VITRO USE AND RESEARCH USE ONLY

NOT FOR USE IN CLINICAL DIAGNOSTIC PROCEDURES

10th Edition (Revised in Jan, 2014)

## [ PROPERTIES ]

Residues: Ala42~Ala271

Tags: Two N-terminal Tags, His-tag and T7-tag

Accession: P43251

Host: *E. coli*

Subcellular Location: Secreted.

Purity: >95%

Endotoxin Level: <1.0EU per 1μg (determined by the LAL method).

Formulation: Supplied as lyophilized form in PBS,

pH7.4, containing 5% trehalose, 0.01% sarcosyl.

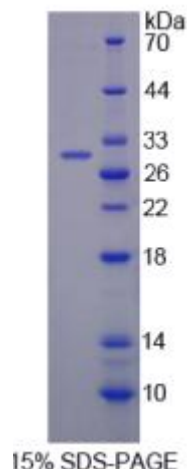
Predicted isoelectric point: 5.4

Predicted Molecular Mass: 30.1kDa

Applications: SDS-PAGE; WB; ELISA; IP.

(May be suitable for use in other assays to be determined by the end user.)

## [ USAGE ]





TEL:4006-871-227 Web:www.ybio.net Email:shybio@126.com

Reconstitute in sterile PBS, pH7.2-pH7.4.

## [ STORAGE AND STABILITY ]

Storage: Avoid repeated freeze/thaw cycles.

Store at 2-8°C for one month.

Aliquot and store at -80°C for 12 months.

Stability Test: The thermal stability is described by the loss rate of the target protein. The loss rate was determined by accelerated thermal degradation test, that is, incubate the protein at 37°C for 48h, and no obvious degradation and precipitation were observed. (Referring from China Biological Products Standard, which was calculated by the Arrhenius equation.) The loss of this protein is less than 5% within the expiration date under appropriate storage condition.

## [ SEQUENCES ]

The sequence of the target protein is listed below.

AHTGEESVA DHHEAEYYVA AVYEHPSILS LNPLALISRQ EALELMNQNL DIYEQQVMTA  
AQKDVIIVF PEDGIHGFNF TRTSIYPFLD FMPSPQVVRW NPCLEPHRFN DTEVLQRLSC  
MAIRGDMFLV ANLGTKEPCH SSDPRCPKDG RYQFNTNVVF SNGTFLVDY RKHNLFEAA  
FDVPLKVDLI TFDTPFAGRF GIFTCFDILF FDPAIRVLRD YKVKHVVYPT A