



TEL:4006-871-227 Web:www.ybio.net Email:shybio@126.com

YBA785Ra01 100μg

Recombinant Kidney Injury Molecule 1 (Kim1)

Organism Species: *Rattus norvegicus* (Rat)

*Instruction  
manual*

FOR IN VITRO USE AND RESEARCH USE ONLY

NOT FOR USE IN CLINICAL DIAGNOSTIC PROCEDURES

10th Edition (Revised in Jan,  
2014)

## [ PROPERTIES ]

Residues: Pro16~Asn231

Tags: Two N-terminal Tags, His-tag and T7-tag

Accession: 054947

Host: *E. coli*

Subcellular Location: Membrane; Single-pass  
type I membrane protein.

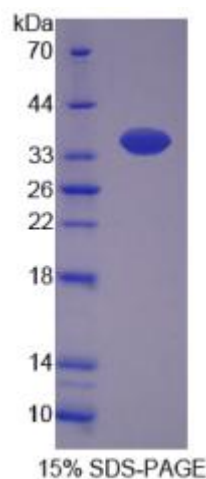
Purity: >90%

Endotoxin Level: <1.0EU per 1μg (determined by  
the LAL method).

Formulation: Supplied as lyophilized form in 20mM

Tris, 150mM NaCl, pH8.0, containing 1mM EDTA, 1mM

DTT, 0.01% sarcosyl, 5% trehalose, and



The possible reasons that the actual band size differs from the predicted are as follows:  
preservative.

Predicted isoelectric point:

8.0 Predicted Molecular Mass:

27.6kDa



TEL:4006-871-227 Web:www.ybio.net Email:shybio@126.com

Accurate Molecular Mass: 36kDa as determined by SDS-PAGE reducing conditions. Applications: SDS-PAGE; WB; ELISA; IP.

(May be suitable for use in other assays to be determined by the end user.)

Note:

1. Splice variants: Alternative splicing may create different sized proteins from the same gene.
2. Relative charge: The composition of amino acids may affects the charge of the protein.
3. Post-translational modification: Phosphorylation, glycosylation, methylation etc.
4. Post-translation cleavage: Many proteins are synthesized as pro-proteins, and then cleaved to give the active form.
5. Polymerization of the target protein: Dimerization, multimerization etc.

## [ USAGE ]

Reconstitute in sterile ddH<sub>2</sub>O.

## [ STORAGE AND STABILITY ]

Storage: Avoid repeated freeze/thaw cycles.

Store at 2-8°C for one month.

Aliquot and store at -80°C for 12 months.

Stability Test: The thermal stability is described by the loss rate of the target protein. The loss rate was determined by accelerated thermal degradation test, that is, incubate the protein at 37°C for 48h, and no obvious degradation and precipitation were observed. (Referring from China Biological Products Standard, which was calculated by the Arrhenius equation.) The loss of this protein is less than 5% within the expiration date under appropriate storage condition.

## [ SEQUENCES ]

The sequence of the target protein is listed below.

PGSVD SYEVVKG VVG HPVTIPCTYS TRGGITTCW GRGQCPYSSC QNLIWINGY



TEL:4006-871-227 Web:[www.ybio.net](http://www.ybio.net) Email:[shybio@126.com](mailto:shybio@126.com)

QVTYRSSGRY NIKGRISEGD VSLTIENSVD SDGLYCCRV EIPGWFNDQK MTFSLVKPE  
IPTSPPTRPT TTRPTTTRPT TISTRSTHVP TSTRVSTSTP TPEQTQTHKP EITTFYAHET  
TAEVTETPSY TPADWNGTVT SSEEAWNHT VRIPLRKPQR N