



TEL:4006-871-227 Web:www.ybio.net Email:shybio@126.com

YBN899Hu01 100 μ g

Recombinant A Disintegrin And Metalloproteinase

With Thrombospondin 19 (ADAMTS19)

Organism Species: Homo sapiens (Human)

Instruction manual

FOR IN VITRO USE AND RESEARCH USE ONLY

NOT FOR USE IN CLINICAL DIAGNOSTIC PROCEDURES

10th Edition (Revised in Jan, 2014)

[PROPERTIES]

Residues: Tyr325~Pro686

Tags: Two N-terminal Tags, His-tag and T7-tag

Accession: Q8TE59

Host: *E. coli*

Subcellular Location: Secreted, extracellular space,
extracellular matrix.

Purity: >95%

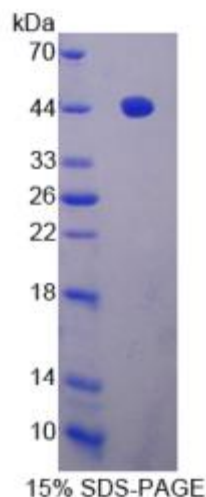
Endotoxin Level: <1.0EU per 1 μ g (determined by the
LAL method).

Formulation: Supplied as lyophilized form in PBS,
pH7.4, containing 5% trehalose, 0.01% sarcosyl.

Predicted isoelectric point: 5.8

Predicted Molecular Mass:

44.2kDa





TEL:4006-871-227 Web:www.ybio.net Email:shybio@126.com

Applications: SDS-PAGE; WB; ELISA; IP.

(May be suitable for use in other assays to be determined by the end user.)

[USAGE]

Reconstitute in sterile PBS, pH7.2-pH7.4.

[STORAGE AND STABILITY]

Storage: Avoid repeated freeze/thaw cycles.

Store at 2-8°C for one month.

Aliquot and store at -80°C for 12 months.

Stability Test: The thermal stability is described by the loss rate of the target protein. The loss rate was determined by accelerated thermal degradation test, that is, incubate the protein at 37°C for 48h, and no obvious degradation and precipitation were observed. (Referring from China Biological Products Standard, which was calculated by the Arrhenius equation.) The loss of this protein is less than 5% within the expiration date under appropriate storage condition.

[SEQUENCES]

The sequence of the target protein is listed below.

YNIETV VVADPAMV SY HG ADAAR RFI LTILN MVFNL FQ HKSLSVQ V NLRVIKLILL
HETPPELYIG HHGEKMLESF CKWQHEEFGK KNDIHLEMST NWGEDMTSVD AAILITRKDF
CVHKDEPCDT VGIAYLSGMC SEKRKCIIAE DNGLNLAFTI AHMGHNMG I NHDNDHPSCA
DGLHIMSGEW IKGQNLGDVS WSRCSKEDLE RFLRSKASNC LLQTNPQSVN SVMVPSKLPG
M T Y T A D E Q C Q I L F G P L A S F C Q E M Q H V I C T G L W C K V E G E K E C R T K L D P P M D
G T D C D L G K W C K A G E C T S R T S A P E H L A G E W S L W S P C S R T C S A G I S S R E R K C
PGLDSEARDC NGPRKQYRIC ENPPCP