



TEL:4006-871-227 Web:www.ybio.net Email:shybio@126.com

YB98086Ra01 100μg

Fibrous Sheath Interacting Protein 1 (FSIP1)

Organism: Rattus norvegicus (Rat)

Instruction manual

FOR IN VITRO USE AND RESEARCH USE ONLY

NOT FOR USE IN CLINICAL DIAGNOSTIC PROCEDURES

7th Edition (Revised in May, 2013)

[PROPERTIES]

Residues: Lys109~Glu328 (Accession # Q66H16), with two N-terminal Tags, His-tag and GST-tag.

Host: *E. coli*

Purity: >95%

Endotoxin Level: <1.0EU per 1μg (determined by the LAL method).

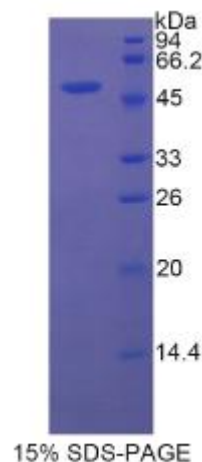
Formulation: Supplied as lyophilized form in PBS, pH7.4, containing 5% sucrose, 0.01% sarcosyl.

Predicted isoelectric point: 5.9

Predicted Molecular Mass: 52.2kDa

Applications: SDS-PAGE; WB; ELISA; IP.

(May be suitable for use in other assays to be determined by the end user.)





TEL:4006-871-227 Web:www.ybio.net Email:shybio@126.com

[USAGE]

Reconstitute in sterile PBS, pH7.2–pH7.4.

[STORAGE AND STABILITY]

Storage: Avoid repeated freeze/thaw cycles.

Store at 2–8°C for one month.

Aliquot and store at –80°C for 12 months.

Stability Test: The thermal stability is described by the loss rate of the target protein. The loss rate was determined by accelerated thermal degradation test, that is, incubate the protein at 37°C for 48h, and no obvious degradation and precipitation were observed. (Referring from China Biological Products Standard, which was calculated by the Arrhenius equation.) The loss of this protein is less than 5% within the expiration date under appropriate storage condition.

[SEQUENCES]

The target protein is fused with two N-terminal Tags, His-tag and GST-tag, its sequence is listed below.

MRNKKFELGL EFPNLPYYID GDVKLTQSMA IIRYIADKHN MLGGCPKERA EISMLEGAVL
DIRYGVSRIA YSKDFETLKV DFLSKLPEML KMFEDRLCHK TYLNGDHVTH PDFMLYDALD
VVLYMDPMCL DAFPKLVCFK KRIEAIQID KYLKSSKYIA WPLQGQATF GGGDHPPKSD
G S T S G S G H H H H H S A G L V P R G S T A I G M K E T A A A K F E R Q H M D S P D L G T L E V
LFQGPLGSEF-KL EGTDAVLQNA IHKMHRLDKI LAKRRIREKE IKKQGLEMRI KLWEELKSAK
NTEDLENDEE LENTKKFLYL TSKSAGTAAE PLHCKFEDDL FSVFHTQIPQ ETYENHTEKD
FTCDVEKNGP LIKTEKQPPS NTEAIEPRSE HSQVFIIRNA EHSQDFIKRN IELAKSSRSP
V V M V E G E K K R L D E L L K G L E D T D S G L S S S E G D Q C A W L V P G E G Y T L A A T E