



TEL:4006-871-227 Web:www.ybio.net Email:shybio@126.com

YBB509Hu01 10µg

Recombinant Killer Cell Immunoglobulin Like Receptor 2DL1 (KIR2DL1)

Organism Species: Homo sapiens (Human)

Instruction manual

FOR IN VITRO USE AND RESEARCH USE ONLY

NOT FOR USE IN CLINICAL DIAGNOSTIC PROCEDURES

11th Edition (Revised in May, 2016)

[PROPERTIES]

Source: Prokaryotic expression.

Host: *E. coli*

Residues: His22~Pro348

Tags: Two N-terminal Tags, His-tag and GST-tag

Tissue Specificity: Breast Cancer.

Subcellular Location: Cell membrane; Single-pass type I membrane protein.

Purity: >98%

Traits: Freeze-dried powder

Buffer formulation: 20mM Tris, 150mM NaCl, pH8.0, containing 1mM EDTA, 1mM DTT, 0.01% sarcosyl, 5%Trehalose and Proclin300.

Original Concentration: 200ug/mL

Applications: SDS-PAGE; WB; ELISA; IP; CoIP; Reporter Assays; Purification; Amine Reactive Labeling.

(May be suitable for use in other assays to be determined by the end user.)

Predicted isoelectric point: 6.2

Predicted Molecular Mass: 68.2kDa

Accurate Molecular Mass: 70kDa as determined by SDS-PAGE reducing conditions.

[USAGE]

Reconstitute in 20mM Tris, 150mM NaCl (pH8.0) to a concentration of 0.1-1.0 mg/mL. Do not vortex.

[STORAGE AND STABILITY]

Storage: Avoid repeated freeze/thaw cycles.

Store at 2-8°C for one month.

Aliquot and store at -80°C for 12 months.

Stability Test: The thermal stability is described by the loss rate. The loss rate was determined by accelerated thermal degradation test, that is, incubate the protein at 37°C for 48h, and no obvious degradation and precipitation were observed. The loss rate is less than 5% within the expiration date under appropriate storage condition.

[SEQUENCE]

```

      HEGVHRKPS  LLAHPGPLVK  SEETVILQW
SDVMFEHFLL  HREGMFNDTL  RLIGEHHDGV  SKANFSISRM  TQDLAGTYRC
YGSVTHSPYQ  VSAPSDPLDI  VIIGLYEKPS  LSAQPGPTVL  AGENVTLSCS
SRSSYDMYHL  SREGEAHERR  LPAGPKVNGT  FQADFPLGPA  THGGTYRCFG
SFHDSPLYEWS  KSSDPLLVS  TGNPSNSWPS  PTEPSSKTGN  PRHLHILIGT
SVVIILFILL  FLLHRWCNS  KKNAAVMDQE  SAGNRTANSE  DSDEQDPQEV
TYTQLNHCVF  TQRKITRPSQ  RPKTPPTDII  VYTELPNAES  RSKVVSCP
  
```

[IDENTIFICATION]

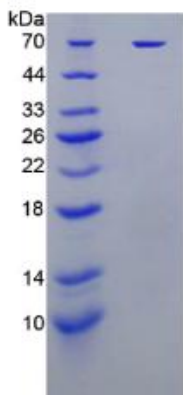


Figure 1. SDS-PAGE



EL:4006-871-
227 Web:www.ybi
o.net Email:shy
bio@126.com