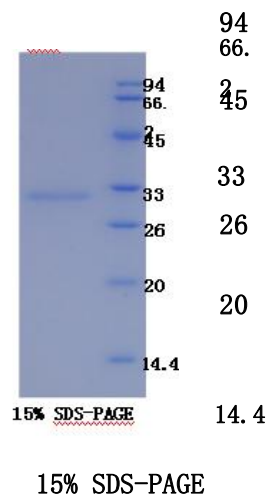




TEL:4006-871-227 Web:www.ybio.net Email:shybio@126.com

YBA785Mu01 100μg
Recombinant Kidney Injury Molecule 1 (Kim1)
Organism Species: *Mus musculus* (Mouse)

9th Edition (Revised in Jul,
2013) kDa



FOR IN VITRO USE AND RESEARCH USE ONLY
NOT FOR USE IN CLINICAL DIAGNOSTIC
PROCEDURES

The possible reasons that the actual band size differs from the predicted are as follows:

[PROPERTIES]

Residues: Tyr22~Gly237 (Accession #
Q5QNS5), with N-terminal His-Tag.
Host: *E. coli*



TEL:4006-871-227 Web:www.ybio.net Email:shybio@126.com

Subcellular Location: Membrane; Single-pass

type I membrane protein.

Purity: >95%

Endotoxin Level: <1.0EU per

1 μ g (determined by the LAL

method).

Formulation: Supplied as lyophilized form in

PBS, pH7.4, containing 5% sucrose, 0.01%

sarcosyl.

Predicted isoelectric point:

8.7 Predicted Molecular Mass:

25.2kDa

Accurate Molecular Mass: 32kDa as determined by SDS-PAGE reducing

conditions. Applications: SDS-PAGE; WB; ELISA; IP.

(May be suitable for use in other assays to be determined by the end user.)

Note:

1. Splice variants: Alternative splicing may create different sized proteins from the same gene.
2. Relative charge: The composition of amino acids may affects the charge of the protein.
3. Post-translational modification: Phosphorylation, glycosylation, methylation etc.
4. Post-translation cleavage: Many proteins are synthesized as pro-proteins, and then cleaved to give the active form.
5. Polymerization of the target protein: Dimerization, multimerization etc.

[USAGE]

Reconstitute in sterile PBS, pH7.2-pH7.4.

[STORAGE AND STABILITY]

Storage: Avoid repeated freeze/thaw cycles.

Store at 2-8°C for one month.



TEL:4006-871-227 Web:www.ybio.net Email:shybio@126.com

Aliquot and store at -80°C for 12 months.

Stability Test: The thermal stability is described by the loss rate of the target protein. The loss rate was determined by accelerated thermal degradation test, that is, incubate the protein at 37°C for 48h, and no obvious degradation and precipitation were observed. (Referring from China Biological Products Standard, which was calculated by the Arrhenius equation.) The loss of this protein is less than 5% within the expiration date under appropriate storage condition.

[SEQUENCES]

The target protein is fused with N-terminal His-Tag, its sequence is listed below.

MGHHHHHSGSEF- YVEVKG VVG HPVTL PCTYS TYRGITT CW GRGQCPSSAC
QNTLIWTNGH RVTYQKSSRY NLKGHISEGD VSLTIENSVE SDGLYCCRV EIPGW FNDQK
VTFSLQVKPE IPTRPPTRPT TTRPTATGRP TTISTRSTHV PTSIRVSTST PPTSTHTWTH
KPEPTTFCPH ETAEVTGIP SHTPTDWNGT VTSSGDTWSN HTEAIPPGKP QKNPTKG

[REFERENCES]

1. McIntire J.J., *et al.* (2001) Nat. Immunol. 2:1109-1116.
2. Church D.M., *et al.* (2009) PLoS Biol. 7:E1000112-E1000112.
3. The MGC Project Team. (2004) Genome Res. 14:2121-2127.
4. Meyers J.H., *et al.* (2005) Nat. Immunol. 6:455-464.