



TEL:4006-871-227 Web:www.ybio.net Email:shybio@126.com

**YBJ103Hu01 10μg**

**Recombinant Filaggrin (FLG)**

**Organism Species: Homo sapiens (Human)**

***Instruction  
manual***

FOR IN VITRO USE AND RESEARCH USE ONLY

NOT FOR USE IN CLINICAL DIAGNOSTIC PROCEDURES

11th Edition (Revised in May,  
2016)

## [ PROPERTIES ]

**Source:** Prokaryotic expression.

**Host:** *E. coli*

**Residues:** Ser3905~Tyr4031

**Tags:** N-terminal His-Tag

**Tissue Specificity:** Skin, Thymus, Stomach, Tonsils, Testis.

**Subcellular Location:** Cytoplasmic granule.

**Purity:** >95%

**Traits:** Freeze-dried powder

**Buffer formulation:** PBS, pH7.4, containing 1mM DTT, 5% trehalose,  
0.01% sarcosyl and Proclin300.

**Original Concentration:** 200ug/mL

**Applications:** SDS-PAGE; WB; ELISA; IP; CoIP; Purification; Amine  
Reactive Labeling.

(May be suitable for use in other assays to be determined by the end  
user.)



TEL:4006-871-227 Web:www.ybio.net Email:shybio@126.com

**Predicted isoelectric point:**

**7.0 Predicted Molecular Mass:**

15.3kDa

**Accurate Molecular Mass:** 25kDa as determined by SDS-PAGE reducing conditions.

**Phenomenon explanation:**

The possible reasons that the actual band size differs from the predicted are as follows:

1. Splice variants: Alternative splicing may create different sized proteins from the same gene.  
Relative charge: The composition of amino acids may affects the charge of the protein.
2. Post-translational modification: Phosphorylation, glycosylation, methylation etc.
3. Post-translation cleavage: Many proteins are synthesized as pro-proteins, and then cleaved to give the active form.
4. Polymerization of the target protein: Dimerization, multimerization etc.

## [ USAGE ]

Reconstitute in PBS (pH7.4) to a concentration of 0.1-1.0 mg/mL. Do not vortex.

## [ STORAGE AND STABILITY ]

**Storage:** Avoid repeated freeze/thaw cycles.

Store at 2-8°C for one month.

Aliquot and store at -80°C for 12 months.

**Stability Test:** The thermal stability is described by the loss rate. The loss rate was determined by accelerated thermal degradation test, that is, incubate the protein at 37°C for 48h, and no obvious degradation and precipitation were observed. The loss rate is less than 5% within the expiration date under appropriate storage condition.

## [ SEQUENCE ]

SHRDTA SHVQSSPVQS DSSTAKEHGH FSSLSQDSAY HSGIQSRGSP  
HSSSSYHYQS EGTERQKGQS GLVWRHGSYG SADYDYGESG FRHSQHGSVS  
YNSNPVVEKE RSDICKASAF GKDHPRYAT Y

## [ IDENTIFICATION ]

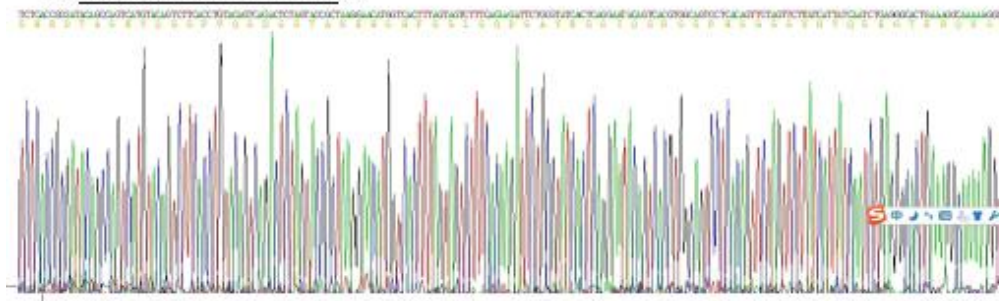
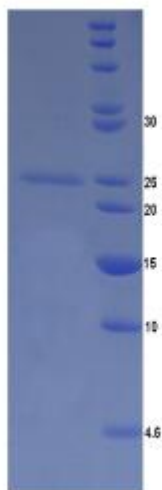


Figure 1. Gene Sequencing (Extract)



**Figure 2. SDS-PAGE**



TEL:4006-871-

227 Web:[www.ybio.net](http://www.ybio.net) Email:[shybio@126.com](mailto:shybio@126.com)



EL:4006-871-  
227 Web:www.ybio.  
net Email:shybio  
@126.com