



TEL:4006-871-227 Web:www.ybio.net Email:shybio@126.com

**YBC108Mu01 50μg**

**Recombinant Growth Differentiation Factor 1  
(GDF1)**

**Organism Species: Mus musculus (Mouse)**

***Instruction  
manual***

FOR IN VITRO USE AND RESEARCH USE ONLY

NOT FOR USE IN CLINICAL DIAGNOSTIC PROCEDURES

11th Edition (Revised in May,  
2016)

## **[ PROPERTIES ]**

**Source:** Prokaryotic expression.

**Host:** *E. coli*

**Residues:** Cys230~Arg357

**Tags:** N-terminal His-Tag

**Tissue Specificity:** Brain.

**Subcellular Location:** Secreted.

**Purity:** >95%

**Endotoxin Level:** <1.0EU per 1μg (determined by the LAL  
method). **Traits:** Freeze-dried powder

**Buffer formulation:** PBS, pH7.4, containing 1mM DTT, 5% trehalose,  
0.01% sarcosyl and Proclin300.

**Original Concentration:** 200ug/mL

**Applications:** SDS-PAGE; WB; ELISA; IP; CoIP; Reporter Assays;

Purification; Amine Reactive Labeling.



TEL:4006-871-227 Web:www.ybio.net Email:shybio@126.com

(May be suitable for use in other assays to be determined by the end user.)

**Predicted isoelectric point:**

**8.3 Predicted Molecular Mass:**

15.6kDa

**Accurate Molecular Mass:** 17kDa as determined by SDS-PAGE reducing conditions.

### [ USAGE ]

Reconstitute in PBS (pH7.4) to a concentration of 0.1-1.0 mg/mL. Do not vortex.

### [ STORAGE AND STABILITY ]

**Storage:** Avoid repeated freeze/thaw cycles.

Store at 2-8°C for one month.

Aliquot and store at -80°C for 12 months.

**Stability Test:** The thermal stability is described by the loss rate. The loss rate was determined by accelerated thermal degradation test, that is, incubate the protein at 37°C for 48h, and no obvious degradation and precipitation were observed. The loss rate is less than 5% within the expiration date under appropriate storage condition.

### [ SEQUENCE ]



TEL:4006-871-227 Web:www.ybio.net Email:shybio@126.com

C PLPRLRRHTE PRVEVGPVGT  
CRTRRLHVSF REVGWHRWVI APRGFLANFC QGTCALPETL RGPGGPPALN  
HAVLRALMHA APTPGAGSP CCVPERLSPI SVLFFDNSDN VVLRHYEDMV  
VDECGR

### [ IDENTIFICATION ]

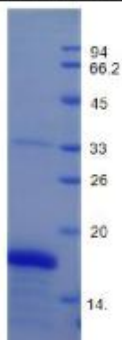


Figure 1. SDS-PAGE