



TEL:4006-871-227 Web:www.ybio.net Email:shybio@126.com

YBF373Mu01 100ug

Recombinant Docking Protein 3 (DOK3)

Organism Species: *Mus musculus* (Mouse)

Instruction manual

FOR IN VITRO USE AND RESEARCH USE ONLY

NOT FOR USE IN CLINICAL DIAGNOSTIC PROCEDURES

10th Edition (Revised in Jan, 2014)

[PROPERTIES]

Residues: Glu160~Glu409

Tags: Two N-terminal Tags, His-tag and T7-tag

Accession: Q9QZK7

Host: *E. coli*

Subcellular Location: Cytoplasm. Cell membrane;

Peripheral membrane protein; Cytoplasmic side .

Purity: >95%

Endotoxin Level: <1.0EU per 1 μ g (determined by the LAL method).

Formulation: Supplied as lyophilized form in 20mM

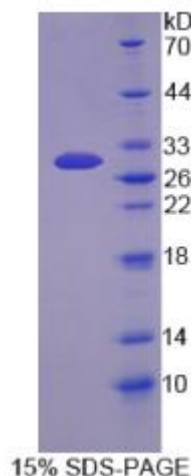
Tris, 150mM NaCl, pH8.0, containing 1mM EDTA, 1mM

DTT, 0.01% sarcosyl, 5% trehalose, and preservative.

Predicted isoelectric point: 5.2

Predicted Molecular Mass:

30.9kDa





TEL:4006-871-227 Web:www.ybio.net Email:shybio@126.com

Applications: SDS-PAGE; WB; ELISA; IP.

(May be suitable for use in other assays to be determined by the end user.)

[USAGE]

Reconstitute in sterile ddH₂O.

[STORAGE AND STABILITY]

Storage: Avoid repeated freeze/thaw cycles.

Store at 2-8°C for one month.

Aliquot and store at -80°C for 12 months.

Stability Test: The thermal stability is described by the loss rate of the target protein. The loss rate was determined by accelerated thermal degradation test, that is, incubate the protein at 37°C for 48h, and no obvious degradation and precipitation were observed. (Referring from China Biological Products Standard, which was calculated by the Arrhenius equation.) The loss of this protein is less than 5% within the expiration date under appropriate storage condition.

[SEQUENCES]

The sequence of the target protein is listed below.

E FPVIVQRTEA TSRCQLKGPY LLVLGQDDIQ LRETSKPQAC FSWPYRFLRK YGSDKGVFSF
EAGRRCDSGE GLFAFSSPRA PDICGVVAAA IARQERLPE LAMSPPCPLP RALSLPSLEP
PGELREVAPG FELPTRKLP LTDPGPQSLP LLLSPTQEGP ASGLYASVCK QTSKHTGTAE
HLYENVCMLE ASPGLTNGGP EAQEGPPGGR SPLGSPYHN TEDLSWPGSA QDSNLEAQYR
RLLELELDE