



TEL:4006-871-227 Web:www.ybio.net Email:shybio@126.com

YBH792Mu01 100ug

Recombinant Insulin Promoter Factor 1 (IPF)

Organism Species: *Mus musculus* (Mouse)

*Instruction manual*

FOR IN VITRO USE AND RESEARCH USE ONLY

NOT FOR USE IN CLINICAL DIAGNOSTIC PROCEDURES

10th Edition (Revised in Jan, 2014)

## [ PROPERTIES ]

Residues: Met1~Arg284

Tags: Two N-terminal Tags, His-tag and GST-tag

Accession: P52946

Host: *E. coli*

Subcellular Location: Nucleus. Cytoplasm, cytosol.

Purity: >90%

Endotoxin Level: <1.0EU per 1μg (determined by the LAL method).

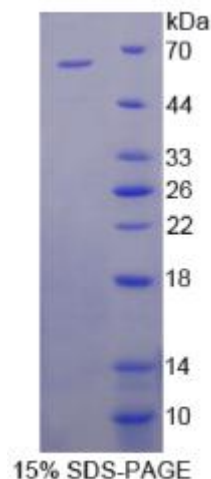
Formulation: Supplied as lyophilized form in 20mM Tris, 150mM NaCl, pH8.0, containing 1mM EDTA, 1mM DTT, 0.01% sarcosyl, 5% trehalose, and preservative.

Predicted isoelectric point: 6.4

Predicted Molecular Mass:

61.0kDa

Applications: SDS-PAGE; WB; ELISA; IP.





TEL:4006-871-227 Web:www.ybio.net Email:shybio@126.com

(May be suitable for use in other assays to be determined by the end user.)

## [ USAGE ]

Reconstitute in sterile ddH<sub>2</sub>O.

## [ STORAGE AND STABILITY ]

Storage: Avoid repeated freeze/thaw cycles.

Store at 2-8°C for one month.

Aliquot and store at -80°C for 12 months.

Stability Test: The thermal stability is described by the loss rate of the target protein. The loss rate was determined by accelerated thermal degradation test, that is, incubate the protein at 37°C for 48h, and no obvious degradation and precipitation were observed. (Referring from China Biological Products Standard, which was calculated by the Arrhenius equation.) The loss of this protein is less than 5% within the expiration date under appropriate storage condition.

## [ SEQUENCES ]

The sequence of the target protein is listed below.

MNSEEQYYAA TQLYKDPCAF QRGVPPEFSA NPPACLYMGR QPPPPPPPPQF TSSLGSLEQG  
SPPDISPYEY PPLASDDPAG AHLHHHLPAQ LGLAHPPPGP FPNGTEPGGL EEPNRVQLPF  
PWMKSTKAHA WKGQWAGGAY TAEPEENKRT RTAYTRAQLL ELEKEFLFNK YISRPRRVEL  
AVMLNLTERH IKIWFQNR RM KWKKEEDKKR SSGTPSGGGG GEEPEQDCAV TSGEELLAVP  
PLPPPGGAVP PGVPAAVREG LLPSGLSVSP QPSSIAPLRP QEPR